



Asthma Policy

St. Peter's Catholic Academy



OUR MISSION

"Together One Family, One Community in Christ."

St. Peter's Catholic Academy recognises that gospel values and the teachings of the church are central to the life of the school. The school aims to create an environment where children can develop physically, emotionally, socially and morally fostering co-operation and communication between home, school, parish and the local community. Together we hope to lead our children towards understanding, tolerance, justice and sensitivity to the needs of others.

Introduction

This school:

- Welcomes pupils with asthma.
- Recognises asthma as a serious but controllable condition.
- Encourages pupils with asthma to achieve their potential in all aspects of school life.
- Recognises the need for immediate access to inhalers.
- Will commence a school asthma care plan for pupils with asthma in partnership with parents and maintain an asthma register.
- Will arrange training which will ensure that staff are aware of asthma and are able to manage an asthma attack - this will include giving emergency treatment.
- Will inform parents of asthma attacks and any treatment given.
- Does not assume responsibility for the routine treatment of asthma (preventative therapy) which remains the prerogative of the parent in conjunction with their GP.

RECORD KEEPING

On school entry pupils with asthma should be identified (see flow chart). The Asthma consent form provided should be completed. An Asthma care plan should be commenced.

An asthma register should be maintained (this should be accessible to staff and a copy kept with the schools emergency inhaler if they have one).

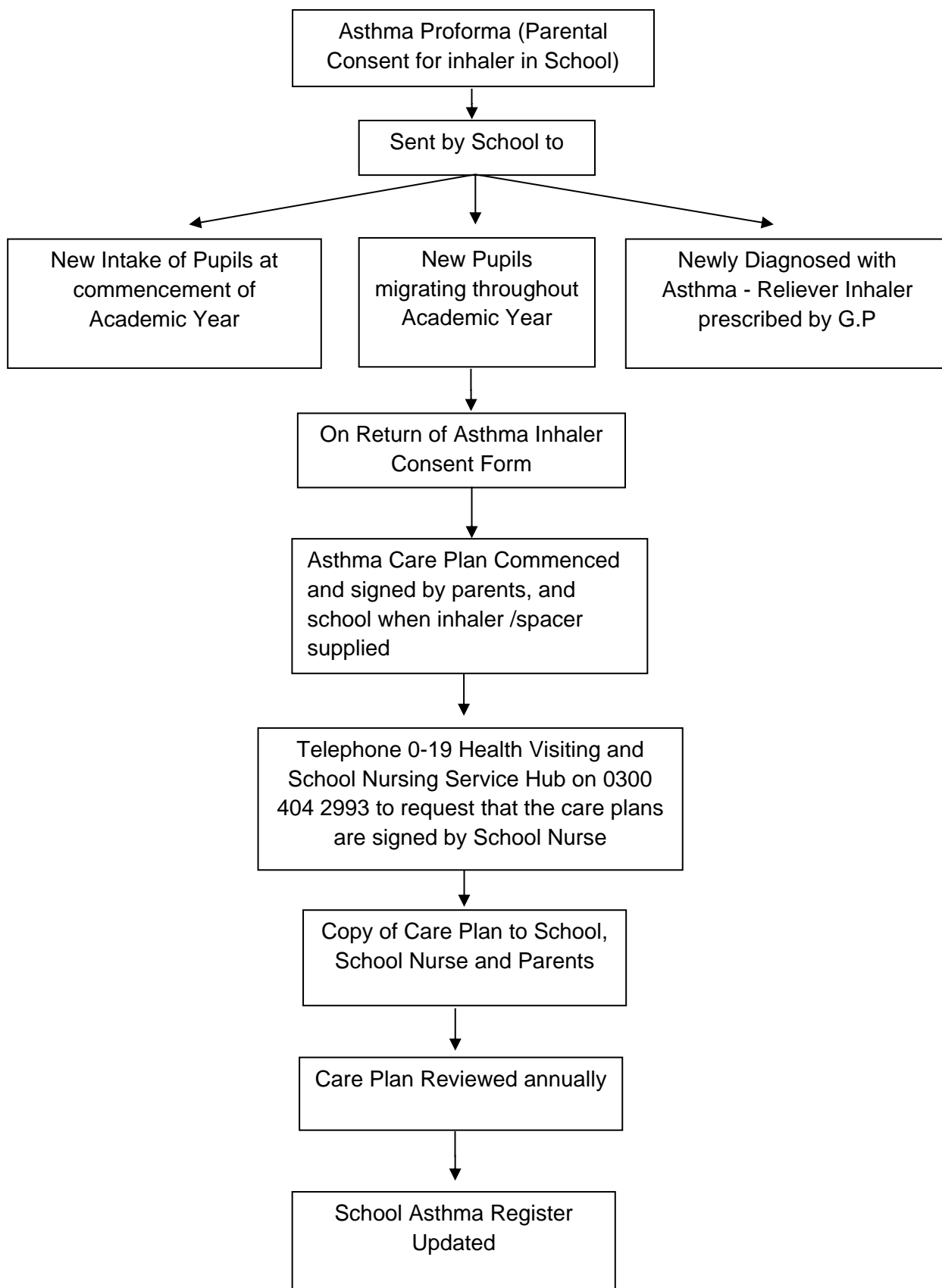
It may be helpful in static class rooms to have a list of pupils with asthma in or near the teacher's desk- particularly when supply teachers are employed.

A record of use of the pupil's inhaler/schools emergency inhaler must be kept on the log sheet provided, with all details completed.

A copy of the notification letter should be given to the parent/carer and also a copy kept on the pupil's record.

If the same pupil has to use the inhaler more than once a term they should be brought to the attention of the School Nurse. This may indicate a pupil is inadequately treated and therefore at risk.

Identification of Pupil requiring Asthma Care Plan



All asthma paperwork including care plans, guidance, administering inhaler letters and records etc are all available in the medical folder as part of the Asthma Documentation for Schools 2021 supplied by NHS Midlands Partnership, NHS Foundation Trust.

Policy Review

This policy was reviewed in March 2023.